

A&D Weighing Solutions

Balances / Scales / Peripheral Devices



AND
A&D Company, Ltd.

Discover Precision

<http://www.aandd.jp>

“Simple, Practical and of High Value...”

Congratulations: You've just picked up the right brochure.

A&D Company, Limited, Japan's top manufacturer of electronic weighing instruments, is particularly proud of the unmatched width of our product portfolio, with innovations always aimed at providing users with high practical utility and high value for the price.

The fact is that no matter what industry you are in, whatever use you have in mind, or whatever solution you are looking for, you will likely find a product that precisely fits your requirements, within your budget!

Key Feature Index



Calibration with Internal Weight

Enables you to ensure balance accuracy with just one key press



Calibration with External Weight

Requires an external weight for calibration



Super Hybrid Sensor/Compact Super Hybrid Sensor

Simultaneously achieves precision, speed and stability, as well as ease of maintenance



Reverse-backlit Liquid Crystal Display

Provides a bright, high contrast that is extremely easy to read and less stressful on the eyes



Vacuum Fluorescent Display

Provides clear and wide-angle visibility even in a dimly-lit area



LED Display

Provides a wide viewing angle and colorful display, allowing quick, intuitive judgments



Liquid Crystal Display with Backlight

Ensures visibility in a dimly-lit area



Liquid Crystal Display

Provides a sharp-cut, energy-saving display



Quick USB Interface

Transfers weighing data to a PC USB port (one way) requiring no special software installation



LAN-Ethernet Interface (with WinCT-Plus software)

Enables acquiring data from and sending commands to multiple weighing instruments



RS-232C Serial Interface

Outputs data to and receives commands from a PC, printer, data logger, etc.



GLP/GMP/GCP/ISO Compliant Output

Outputs the manufacturer, model, serial number, ID number, space for signature, calibration records, etc., for documentation requirements



Clock and Calendar Function

Adds time and date information to output data



Data Memory Function

Stores weighing data, calibration results, unit masses, upper/lower limits, preset tares, etc., for easy recall or output



Counting Function with Automatic Counting Accuracy Improvement

Displays the number of pieces based on their individual unit weight while automatically optimizing the accuracy of the unit weight



Counting Function

Displays the number of pieces based on their individual unit weight



Percentage Function

Displays the weight value as a percentage of a stored reference mass



Animal Weighing (Hold) Function

Helps measure and record the weight of a moving object such as an animal by averaging fluctuation



Statistical Calculation Function

Displays and outputs statistical calculation data including number of data, sum, max, min, range (max – min), mean, standard deviation and coefficient of variation



Accumulation (M+) Function

Sums the weighing results and displays the total value



Comparator Function

Compares weight values within set limits and makes pass/fail judgments



Auto Power ON Function

Activates the weighing mode display automatically when plugged in



Auto Power OFF Function

Turns off the display automatically after a period of inactivity to save power



Underhook

Enables magnetic, hot, or contaminated materials to be hanged for weighing or for density measurements



Rechargeable Battery Operation

Works with a built-in rechargeable battery unit



Normal Battery Operation

Works with off-the-shelf battery cells



Smart Range Function

Automatically switches between the precision and standard ranges, and recovers the full precision range with a press of the RE-ZERO (tare) key



Universal Flexi Coms Function

Enables editing of serial data output format or printout format



EC Type Approval

Includes models that are legal for trade in the member countries of the European Union



IP69K Dust and Waterproof

Withstands heavy-duty washdown with high-pressure (8,000 to 10,000 kPa) and high-temperature (80 ± 5 °C) water from up close (100 to 150 mm)



IP68 Dust and Waterproof

Permits no infiltration of water while immersed to a depth of 1 meter for 24 hours



IP65 Dust and Waterproof

Permits no infiltration of dust and withstands water jetting from any direction



NSF Compliant

Meets food protection and sanitation requirements as established by NSF International



Software

Data management software available

Abbreviations and Conversion Factors of Weighing Units

| Abbreviation | Unit | Conversion factor (to gram) |
|--------------|------------------------------|---------------------------------------|
| g | Gram | 1 g |
| mg | Milligram | 0.001 g |
| kg | Kilogram | 1000 g |
| oz | Ounce (avoir) | 28.349523125 g |
| lb | Pound | 453.59237 g |
| lb-oz | Pound-Ounce | 1 lb = 16 oz 1 oz = 28.349523125 g |
| ozt | Troy ounce | 31.1034768 g |
| ct | Metric carat | 0.2 g |
| mom | Momme | 3.75 g |
| dwt | Pennyweight | 1.55517384 g |
| gr | Grain (UK) | 0.06479891 g |
| tl | Tael (HK general, Singapore) | 37.7994 g |
| | Tael (HK jewelry) | 37.429 g |
| | Tael (Taiwan) | 37.5 g |
| | Tael (China) | 31.25 g |
| tol | Tola (India) | 11.6638038 g |
| SG | Specific gravity | N/A |
| N | Newton | See below* |

* Newton = (weight in gram) × (9.80665 m/s²) / 1000

Table of Contents

| | | | |
|---|------|--|------|
| BM Series Micro Analytical Balances (Capacity: 22 g to 520 g / Resolution: 0.001 mg to 0.1 mg) | P.6 | GX-K/GF-K Series IP65 Dust & Waterproof Precision Industrial Balances (Capacity: 8.1 kg to 31 kg / Resolution: 0.01 g to 0.1 g) | P.19 |
| GH Series Semi-Micro Analytical Balances (Capacity: 101 g to 250 g / Resolution: 0.01 mg to 0.1 mg) | P.8 | GP Series IP65 Dust & Waterproof Precision Industrial Balances (Capacity: 12 kg to 101 kg / Resolution: 0.1 g to 1 g) | P.20 |
| HR-i Series Semi-Micro Analytical Balances (Capacity: 51 g to 320 g / Resolution: 0.01 mg to 0.1 mg) | P.9 | MC Series Mass Comparators (Capacity: 1100 g to 101 kg / Resolution: 0.0001 g to 0.1 g) | P.21 |
| GR Series Semi-Micro Analytical Balances (Capacity: 42 g to 310 g / Resolution: 0.01 mg to 0.1 mg) | P.9 | AD-4212A/AD-4212B Series Production Line Weighing Sensors (Capacity: 21 g to 1100 g / Resolution: 0.001 mg to 1 mg) | P.22 |
| HR-AZ/HR-A Series Compact Analytical Balances (Capacity: 102 g to 252 g / Resolution: 0.1 mg) | P.10 | AD-4212C Series EM-DLC (Capacity: 51 g to 6200 g / Resolution: 0.0001 g to 0.01 g) | P.23 |
| MS-70/MX-50/MF-50/ML-50 Moisture Analyzers (Capacity: 71 g to 51 g / Resolution: 0.001% to 0.1%) | P.12 | AD-1691 Weighing Environment Analyzer | P.24 |
| AD-4212B-PT/AD-4212A-PT FX-300i-PT Pipette Accuracy Testers | P.14 | AD-1687 Weighing Environment Logger | P.24 |
| AD-1690 Leak Tester | P.14 | AD-1688 Weighing Data Logger | P.25 |
| GX/GF Series Precision Balances (Capacity: 210 g to 8100 g / Resolution: 0.001 g to 0.1 g) | P.15 | AD-8527 Quick USB Adapter | P.25 |
| FZ-i/FX-i Series Precision Balances (Capacity: 122 g to 5200 g / Resolution: 0.001 g to 0.01 g) | P.16 | AD-8127 Compact Printer | P.25 |
| FZ-iWP/FX-iWP Series IP65 Dust & Waterproof Precision Balances (Capacity: 122 g to 3200 g / Resolution: 0.001 g to 0.01 g) | P.17 | AX-USB-25P/9P/DIN Serial/USB Converter | P.26 |
| EK-i/EW-i Series Compact Balances (Capacity: 120 g to 12000 g / Resolution: 0.01 g to 1 g) | P.18 | AD-8526 Serial/Ethernet Converter | P.26 |
| | | WinCT Windows Communication Tools (Freeware) | P.26 |
| | | WinCT-Plus Windows Communication Tools (Freeware) | P.26 |

| | | | |
|---|------|--|------|
| AD-1671 _____ | P.27 | FG Series _____ | P.34 |
| Anti-Vibration Table for Balances | | Platform Scales | |
| | | (Capacity: 30 kg to 150 kg / Resolution: 0.002 g to 0.01 g) | |
| AD-1672 _____ | P.27 | HC-i Series _____ | P.34 |
| Tabletop Breeze Break | | Counting Scales | |
| | | (Capacity: 3 kg to 30 kg / Min. unit weight: 0.005 g to 0.05 g) | |
| AD-8920A _____ | P.27 | FC-Si/FC-i Series _____ | P.35 |
| Remote Display | | Counting Scales | |
| | | (Capacity: 500 g to 50 kg / Min. unit weight: 0.00005 g to 0.05 g) | |
| AD-8922A _____ | P.27 | HT Series _____ | P.36 |
| Remote Controller | | Compact Scales | |
| | | (Capacity: 120 g to 5100 g / Resolution: 0.01 g to 1 g) | |
| AD-1682 _____ | P.28 | SK-WP Series _____ | P.37 |
| Rechargeable Battery Unit | | IP65 Dust & Waterproof Compact Bench Scales | |
| | | (Capacity: 1000 g to 30 kg / Resolution: 0.5 g to 20 g) | |
| AD-1683 _____ | P.28 | HL-WP Series _____ | P.37 |
| Static Eliminator | | IP65 Dust & Waterproof Compact Scales | |
| | | (Capacity: 300 g to 3000 g / Resolution: 0.1 g to 1 g) | |
| AD-1684 _____ | P.28 | SJ-HS Series _____ | P.38 |
| Electrostatic Field Meter | | Compact Bench Scales | |
| | | (Capacity: 1000 g to 30 kg / Resolution: 0.5 g to 20 g) | |
| AD-1653 _____ | P.28 | HL-i Series _____ | P.38 |
| Density Determination Kit for Analytical Balances | | Compact Scales | |
| | | (Capacity: 200 g to 2000 g / Resolution: 0.1 g to 1 g) | |
| SW Series _____ | P.29 | HJ-150 _____ | P.38 |
| IP69K Super Washdown Scales | | Pocket Scale | |
| (Capacity: 6 kg to 150 kg / Resolution: 0.0005 g to 0.01 g) | | (Capacity: 150 g / Resolution: 0.1 g) | |
| SC/SE Series _____ | P.30 | FZ-CT/FX-CT Series _____ | P.39 |
| IP68 Washdown Scales | | Carat Balances | |
| (Capacity: 30 kg to 150 kg / Resolution: 0.005 g to 0.02 g) | | (Capacity: 510 ct to 1260 ct / Resolution: 0.001 ct) | |
| FS-i Series _____ | P.31 | HT-500GD _____ | P.39 |
| IP65 Dust & Waterproof Checkweighing Scales | | Jewelry Scale | |
| (Capacity: 6 kg to 30 kg / Resolution: 0.0005 g to 0.002 g) | | (Capacity: 510 g / Resolution: 0.1 g) | |
| HV-C(P)/HW-C(P) Series _____ | P.32 | | |
| Multi-Functional Platform Scales | | | |
| (Capacity: 10 kg to 220 kg / Resolution: 0.001 g to 0.02 g) | | | |
| HV-WP/HW-WP Series _____ | P.33 | | |
| IP65 Dust & Waterproof Platform Scales | | | |
| (Capacity: 10 kg to 220 kg / Resolution: 0.001 g to 0.02 g) | | | |

BM Series



BM-22

Optional



- **Instant and smooth static elimination using a built-in fanless ionizer to ensure stable weighing**
- **Large working space for better operability and a wider range of applications**
- **Interlockable sliding doors allowing efficient operation with both hands**
- ✓ Anti-static glass breeze break with a thin evaporated metal coating
- ✓ Adjustable (manual or automatic) response characteristics to help cope with the effect of drafts and vibrations
- ✓ Automatic self calibration to maintain accuracy under temperature changes
- ✓ Embedded temperature, humidity and atmospheric pressure sensors
- ✓ Multiple weighing units: g, mg, oz, ozt, ct, mom, dwt, gr, SG (either tl or tol can be added upon request)
- ✓ Density determination function and an optional density determination kit (for BM-252/200/300/500 only)
- ✓ Comes equipped with the handy AD-1688 weighing data logger
- ✓ Expert assessment of the set-up environment using AND-MEET* (please inquire at your local distributor for details) * Patent pending

Special pans/holder for the BM-20/22 (standard accessories)



Aluminum analytical pans
ø8 mm (0.05 ml) / ø12 mm (0.3 ml) / ø15 mm (0.8 ml)



Weighing pans for PM filters
ø50 mm / ø95 mm



Microfuge tube holder

Neutralizing chamber

Separation plate

Weighing Chamber



Interlockable sliding door

Possible to slide a door open using the handle on the opposite side



Pipette accuracy testing using an optional kit (BM-014)



| Model | BM-20 | BM-22 | BM-252 | BM-200 | BM-300 | BM-500 |
|-------------------|---------------------|------------------------------|---------------------|---------|---------|---------|
| Capacity | 22 g | 5.1 g / 22 g | 250 g | 220 g | 320 g | 520 g |
| Resolution | 0.001 mg | 0.001 mg / 0.01 mg | 0.01 mg | 0.1 mg | | |
| Repeatability (σ) | 0.0025 mg (for 1 g) | 0.004 mg (for 1 g) / 0.01 mg | 0.03 mg (for 100 g) | 0.1 mg | 0.2 mg | |
| Linearity | ±0.010 mg | ±0.010 mg / ±0.02 mg | ±0.10 mg | ±0.2 mg | ±0.3 mg | ±0.5 mg |
| Weighing pan | ø25 mm | | | ø90 mm | | |

Options & Accessories

AD-1653 Density determination kit (for BM-252/200/300/500 only)
AD-1671 Anti-vibration table for balances *Strongly recommended!*
AD-1672 Tabletop breeze break *Strongly recommended!*
BM-08 Ethernet interface with WinCT-Plus software
BM-014 Pipette accuracy testing kit
BM-025 Foot switch

AX-BM-031 Display covers (5 pcs)
AX-BM-032 Microfuge tube holder (for BM-20/22 only)
AX-BM-NEEDLESET Electrode units for the ionizer
AX-ROUND-PAN-L Round aluminum analytical pans (ø15 mm, 0.8 ml, 100 pcs)
AX-ROUND-PAN-M Round aluminum analytical pans (ø12 mm, 0.3 ml, 100 pcs)
AX-ROUND-PAN-S Round aluminum analytical pans (ø8 mm, 0.05 ml, 100 pcs)

GH Series



Optional



- ✓ Adjustable (manual or automatic) response characteristics to help cope with the effect of drafts and vibrations
- ✓ Automatic self calibration to maintain accuracy under temperature changes
- ✓ Anti-static glass breeze break with a thin evaporated metal coating
- ✓ Multiple weighing units: g, mg, oz, ozt, ct, mom, dwt, gr, SG (either tl or tol can be added upon request)
- ✓ Density determination function and an optional density determination kit

| Model | GH-252 | GH-202 | GH-120 | GH-200 | GH-300 |
|----------------------------|-----------------------------|------------------------------|--------------|--------|--------------|
| Capacity | 101 g / 250 g | 51 g / 220 g | 120 g | 220 g | 320 g |
| Resolution | 0.01 mg / 0.1 mg | | 0.1 mg | | |
| Repeatability (σ) | 0.03 mg / 0.1 mg | 0.02 mg / 0.1 mg | 0.1 mg | | 0.2 mg |
| Linearity | ± 0.1 mg / ± 0.2 mg | ± 0.03 mg / ± 0.2 mg | ± 0.2 mg | | ± 0.3 mg |
| Weighing pan | $\varnothing 90$ mm | | | | |

Options & Accessories

AD-1653 Density determination kit

GH-02 Quick USB interface with cable

GH-08 Ethernet interface with WinCT-Plus software

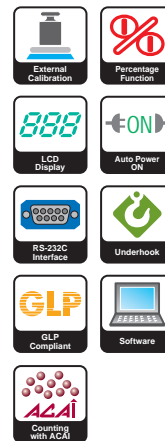
* GH-02 and GH-08 cannot be used at the same time.

HR-i Series



- ✓ Adjustable response characteristics to help cope with the effect of drafts and vibrations
- ✓ Anti-static glass breeze break with a thin evaporated metal coating
- ✓ Multiple weighing units: g, mg, oz, ozt, ct, mom, dwt, gr (either tl or tol can be added upon request)

| Model | HR-202i | HR-300i |
|-------------------|--------------------|---------|
| Capacity | 51g / 220g | 320 g |
| Resolution | 0.01 mg / 0.1 mg | 0.1 mg |
| Repeatability (σ) | 0.02 mg / 0.1 mg | 0.2 mg |
| Linearity | ±0.03 mg / ±0.2 mg | ±0.3 mg |
| Weighing pan | ø90 mm | |



Semi-Micro Analytical Balances

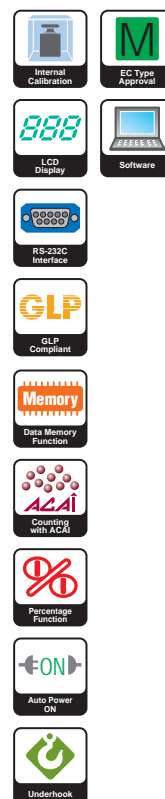
GR Series



Open left or right side from front

- ✓ Handy lever on the front to open either side of the weighing chamber for quick and efficient access
- ✓ Small footprint of 249 mm by 330 mm to save space
- ✓ Adjustable (manual or automatic) response characteristics to help cope with the effect of drafts and vibrations
- ✓ Automatic self calibration to maintain accuracy under temperature changes
- ✓ Anti-static glass breeze break with a thin evaporated metal coating
- ✓ Multiple weighing units: g, mg, oz, ozt, ct, mom, dwt, gr, SG (either tl or tol can be added upon request)
- ✓ Density determination function and an optional density determination kit

| Model | GR-202 | GR-120 | GR-200 | GR-300 |
|-------------------|--------------------|---------|--------|---------|
| Capacity | 42 g / 210 g | 120 g | 210 g | 310 g |
| Resolution | 0.01 mg / 0.1 mg | 0.1 mg | | |
| Repeatability (σ) | 0.02 mg / 0.1 mg | 0.1 mg | 0.2 mg | |
| Linearity | ±0.03 mg / ±0.2 mg | ±0.2 mg | | ±0.3 mg |
| Weighing pan | ø85 mm | | | |



HR-AZ/HR-A Series



HR-AZ



HR-A



HR-AZ



HR-AZ



HR-A

- High-speed weighing with 2-second stabilization
- Removable, shatterproof breeze break with antistatic coating
- Compact foot print: 198 mm × 294 mm (smaller than an A4 sheet of paper)
- ✓ Rotary sliding doors requiring no extra space at the rear
- ✓ Adjustable response characteristics to help cope with the effect of drafts and vibrations
- ✓ Multiple weighing units: g, mg, oz, ozt, ct, mom, dwt, gr, SG, and a user-programmable unit for conversion applications (either tl, tol or N can be added upon request)
- ✓ Density determination function and an optional density determination kit
- ✓ Easily visible, front-mounted spirit level for adjusting the leveling feet

Quickly removable breeze break

Allows fast, simple cleaning of the balance and use in confined spaces like glove boxes. The non-glass breeze break also makes the balance suitable for use in food/drug-related production lines.



HR-251AZ/A



Optional



Rotary sliding doors

The balance requires no extra space at the rear in order to access the weighing chamber, as the doors simply rotate behind the balance.

Density determination kit (AD-1654)

Using this kit, it is easy to calculate the density of a solid or liquid substance in density mode.



| Model | HR-100AZ HR-100A | HR-150AZ HR-150A | HR-250AZ HR-250A | HR-251AZ HR-251A |
|------------------------------|---------------------|---------------------|--|---------------------|
| Capacity | 102 g | 152 g | 252 g | 62 g / 252 g |
| Resolution | 0.1 mg | | | 0.1 mg / 1 mg |
| Repeatability ^(a) | 0.1 mg | | 0 to 200 g: 0.1 mg 200 to 252 g: 0.2 mg | 0.1 mg / 0.5 mg |
| Linearity | ±0.2 mg | | ±0.3 mg | ±0.3 mg / ±1 mg |
| Weighing pan | ø90 mm | | | |

Options & Accessories

- AD-1654 Density determination kit
- FXi-02 Quick USB interface with cable
- FXi-08 Ethernet interface with WinCT-Plus software
- FXi-09 Built-in rechargeable battery

- FXi-10 Small breeze break
- FXi-11 Large breeze break
- AX-FXi-31 Display covers (5 pcs)

* FXi-02, FXi-08 and FXi-09 cannot be used at the same time.

MS-70/MX-50 MF-50/ML-50



■ Low moisture content measurement at 10 ppm (0.001%) resolution (MS-70)

■ Fast and uniform heating with halogen lamp and innovative Secondary Radiation Assist (SRA) technology

■ Accuracy verification with Sodium Tartrate Dihydrate (standard with MS-70, MX-50, and MF-50)

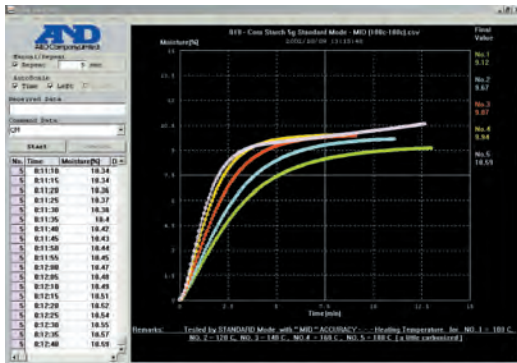
- ✓ Calibration function for heating temperature (for MS-70 and MX-50 only)
- ✓ Five different measurement programs
- ✓ Selectable heating patterns
- ✓ Translucent window enabling progress check
- ✓ Memory function for measurement conditions
- ✓ Quick reference card provided



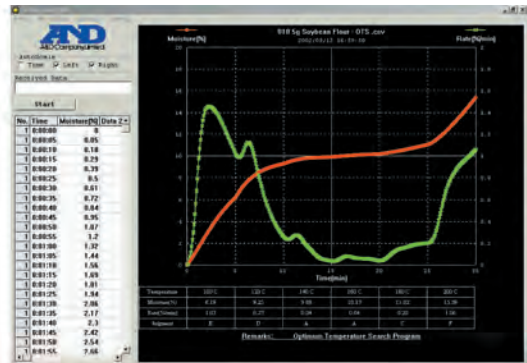
Secondary Radiation Assist (SRA)

The thermally conductive glass spreads the heat evenly over the sample, realizing more efficient and accurate measurement. It also protects the halogen lamp from soiling from the volatile components of samples.

Special Software “WinCT-Moisture” (Standard with MS-70 and MX-50)



RsFig (Corn starch)



RsTemp (Soybean flour)

- Displays moisture rate changes over time in a graph (RsFig)
- Quickly and automatically suggests the most suitable heating conditions for first-time samples (RsTemp)
- ✓ Calculates measurement data statistics
- ✓ Saves the recorded data in CSV format
- ✓ Detects other changes to the sample material in addition to moisture rate
- ✓ Includes sample data summary

| Model | MS-70 | MX-50 | MF-50 | ML-50 | |
|--------------------------------|--|-----------------------|--------------|-------------------|-----------|
| Measurement method | 400 W straight halogen lamp heating system with SRA filter and SHS weighing technology | | | | |
| Maximum sample weight capacity | 71 g | 51 g | | | |
| Min. display | Moisture content | 0.001% / 0.01% / 0.1% | 0.01% / 0.1% | 0.05% / 0.1% / 1% | 0.1% / 1% |
| | Weight | 0.0001 g | 0.001 g | 0.002 g | 0.005 g |
| Repeatability (σ) | Moisture content (over 1 g) | 0.05% | 0.1% | 0.2% | 0.5% |
| | Moisture content (over 5 g) | 0.01% | 0.02% | 0.05% | 0.1% |
| | Weight | 0.0005 g | 0.001 g | 0.002 g | 0.005 g |
| Drying temperature | 30 to 200 °C | 50 to 200 °C | | | |
| Measurement unit | Wet base / Dry base / Dry content / Ratio / Weight | | | | |
| Sample pan size | ø85 mm | | | | |

Options & Accessories

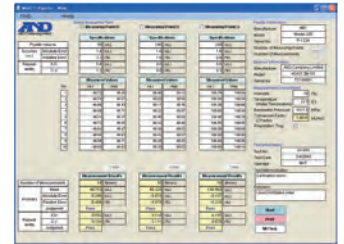
| | | | |
|---------------|---|------------|---|
| AX-MX-30 | Disposable aluminum pan (100 pcs) | AX-MX-38 | Display cover (2 pcs) |
| AX-MX-31 | Sample pan (100 pcs) | AX-MX-39 | Dust cover |
| AX-MX-32-1 | Filtration glass fiber sheet (100 sheets) | AX-MX-40 | RS-232C cable (25P-9P, 2 m) |
| AX-MX-32-2 | Glass fiber sheet (100 sheets) | AX-MX-41 | Calibration weight (20 g) |
| AX-MX-33 | Sodium Tartrate Dihydrate (30 g × 12 pcs) | AX-MX-42 | WinCT-Moisture |
| AX-MX-34-120V | Halogen lamp (AC 100 to 120 V) | AX-MX-43 | Temperature calibrator (for MS-70 and MX-50 only) |
| AX-MX-34-240V | Halogen lamp (AC 200 to 240 V) | AX-USB-25P | Serial/USB converter |
| AX-MX-35 | Pan handle (2 pcs) | | |
| AX-MX-36 | Tweezers (2 pairs) | | |
| AX-MX-37 | Spoon (2 pcs) | | |

AD-4212B-PT AD-4212A-PT FX-300i-PT



AD-4212B-PT

* Pipette is not included.



WinCT-Pipette

- ✓ Automatic mass-to-volume conversion and accuracy judgment using the special “WinCT-Pipette” software
- ✓ Judgment by your preferred criteria – manufacturer specifications, ISO8655, or your own
- ✓ Evaporation trap to minimize errors due to evaporation
- ✓ Portable carrying case for testing easily on-site*
- ✓ Printing function for GLP documentation requirements, etc.

* Not advisable with 0.001 mg resolution

| Model | AD-4212B-PT | AD-4212A-PT | FX-300i-PT |
|-------------------|-------------------------------|-------------|------------|
| Capacity | 5.1 g / 31 g / 110 g* | 110 g | 320 g |
| Resolution | 0.001 mg / 0.01 mg / 0.1 mg | 0.1 mg | 1 mg |
| Repeatability (σ) | 0.015 mg / 0.05 mg / 0.1 mg | 0.15 mg | 1 mg |
| Linearity | ±0.05 mg / ±0.05 mg / ±0.2 mg | ±0.3 mg | ±2 mg |

* Smart range

Leak Tester

AD-1690



* Pipette is not included.

- ✓ Takes only 5 seconds to determine if a pipette has a leak
- ✓ Leak detection by depressurization (-20kPa ±20%) ensuring no contamination (e.g. dust) enters the pipette being tested
- ✓ RS-232C interface to output data to a PC, etc.

Options & Accessories

- AD-1690-01 Replacement tube set (adapter × 1, attachment × 4)
- AD-1690-02 Replacement filter set (filter unit × 1, filter element × 10)
- AD-1690-015 Carrying case

GX/GF Series



GX



GF

- ✓ High-speed weighing with 1-second stabilization
- ✓ Adjustable response characteristics to help cope with the effect of drafts and vibrations (GX: manual or automatic / GF: manual only)
- ✓ Automatic self calibration to maintain accuracy under temperature changes (GX)
- ✓ Multiple weighing units: g, oz, lb, lb-oz, ozt, ct, mom, dwt, gr, SG, and a user-programmable unit for conversion applications (either tl, tol or N can be added upon request)
- ✓ Density determination function (an optional density determination kit is available for the models with 0.001 g resolution)
- ✓ Quick reference card provided

- GX Internal Calibration
- GF External Calibration
- SHS Super Hybrid Sensor
- VFD Display
- RS-232C Interface
- GLP Compliant
- GX Clock & Calendar
- Memory Data Memory Function
- ACAI Counting with ACAI
- Percentage Function
- Animal Weighing
- Comparator Function
- ON Auto Power ON
- OFF Auto Power OFF
- Underhook
- GX M EC Type Approval
- Software
- Quick USB

| Model | GX-200 GF-200 | GF-300 | GX-400 GF-400 | GX-600 GF-600 | GX-800 GF-800 | GX-1000 GF-1000 |
|--------------|------------------|--------|------------------|------------------|------------------|--------------------|
| Capacity | 210 g | 310 g | 410 g | 610 g | 810 g | 1100 g |
| Resolution | 0.001 g | | | | | |
| Weighing pan | 128 × 128 mm | | | | | |

| Model | GF-1200 | GX-2000 GF-2000 | GF-3000 | GX-4000 GF-4000 | GX-6100 GF-6100 | GX-6000 GF-6000 | GX-8000 GF-8000 |
|--------------|--------------|--------------------|---------|--------------------|--------------------|--------------------|--------------------|
| Capacity | 1210 g | 2100 g | 3100 g | 4100 g | 6100 g | 6100 g | 8100 g |
| Resolution | 0.01 g | | | | | 0.1 g | |
| Weighing pan | 165 × 165 mm | | | | | | |

Options & Accessories

- GX-02 Quick USB interface with cable
- GX-04 Comparator output with a buzzer/RS-232C/Current loop output
- GX-06 Analog output/Current loop output
- GX-10 Glass breeze break for the pan size of 128 mm × 128 mm
- * Only one of GX-02, GX-04, GX-06 or the standard RS-232C interface can be used.
- ** GX-04 and GX-06 are factory-installed options.

- GX-11 Glass breeze break for the pan size of 165 mm × 165 mm
- GX-12 Animal weighing pan (not available for GX/GF-200)
- GX-13 Density determination kit (for the pan size of 128 mm × 128 mm only)

Optional

FZ-i/FX-i Series



FZ-i



FX-i



FZ-i



FZ-i



Optional



FZ-i



FX-i

- ✓ High-speed weighing with 1-second stabilization
- ✓ Compact foot print: 198 mm × 294 mm (smaller than an A4 sheet of paper)
- ✓ Protection mechanism against vertical and transverse overloading
- ✓ Adjustable response characteristics to help cope with the effect of drafts and vibrations
- ✓ Multiple weighing units: g, oz, lb, lb-oz, ozt, ct, mom, dwt, gr, and a user-programmable unit for conversion applications (either tl, tol or N can be added upon request)

| Model | FZ-120i FX-120i | FZ-200i FX-200i | FZ-300i FX-300i | FZ-500i FX-500i | FZ-1200i FX-1200i | FZ-2000i FX-2000i | FZ-3000i FX-3000i | FZ-5000i FX-5000i |
|--------------|--------------------|--------------------|--------------------|--------------------|----------------------|----------------------|----------------------|----------------------|
| Capacity | 122 g | 220 g | 320 g | 520 g | 1220 g | 2200 g | 3200 g | 5200 g |
| Resolution | 0.001 g | | | | 0.01 g | | | |
| Weighing pan | ø130 mm | | | | ø150 mm | | | |

Options & Accessories

- FXi-02 Quick USB interface with cable
- FXi-08 Ethernet interface with WinCT-Plus software
- FXi-09 Built-in rechargeable battery
- FXi-10 Small breeze break
- FXi-11 Large breeze break
- FXi-12 Animal weighing pan (for FZ/X-1200i/2000i/3000i/5000i only)
- FXi-15 Carrying case
- AX-FXi-31 Main unit cover (5 pcs)

★ FX-02, FXi-08 and FXi-09 cannot be used at the same time.

FZ-iWP/FX-iWP Series



FZ-iWP



FX-iWP

- ✓ High-speed weighing with 1-second stabilization
- ✓ Compact foot print: 198 mm × 294 mm (smaller than an A4 sheet of paper)
- ✓ Protection mechanism against vertical and transverse overloading
- ✓ Adjustable response characteristics to help cope with the effect of drafts and vibrations
- ✓ Multiple weighing units: g, oz, lb, lb-oz, ozt, ct, mom, dwt, gr, and a user-programmable unit for conversion applications (either tl, tol or N can be added upon request)



FZ-iWP



FX-iWP



FZ-iWP



Optional



FZ-iWP



| Model | FZ-120iWP FX-120iWP | FZ-200iWP FX-200iWP | FZ-300iWP FX-300iWP | FZ-1200iWP FX-1200iWP | FZ-2000iWP FX-2000iWP | FZ-3000iWP FX-3000iWP |
|--------------|------------------------|------------------------|------------------------|--------------------------|--------------------------|--------------------------|
| Capacity | 122 g | 220 g | 320 g | 1220 g | 2200 g | 3200 g |
| Resolution | 0.001 g | | | 0.01 g | | |
| Weighing pan | ø130 mm | | | ø150 mm | | |

Options & Accessories

- FXi-02 Quick USB interface with cable
- FXi-08 Ethernet interface with WinCT-Plus software
- FXi-09 Built-in rechargeable battery
- FXi-WP-10 Small breeze break
- FXi-WP-11 Large breeze break
- FXi-12 Animal weighing pan (for FZ/X-1200iWP/2000iWP/3000iWP only)
- FXi-15 Carrying case
- AX-FXi-31 Main unit cover (5 pcs)
- AX-KO2737-500 Waterproof RS-232C cable (5 m)

* FXi-02, FXi-08 and FXi-09 cannot be used at the same time.
 ** FZ-iWP/FX-iWP series are not IP65 compliant with FXi-02, FXi-08 or FXi-09.

EK-i/EW-i Series



Optional



For capacity of 4000 g or larger



EK-i



EW-i

- ✓ Hygienic and chemically resistant stainless steel (SUS304) weighing pan
- ✓ Adjustable response characteristics to help cope with the effect of drafts and vibrations
- ✓ Multiple weighing units: g, oz, lb, ozt, ct, mom, dwt, gr (either tl, tol or N can be added upon request)
- ✓ Security ring to prevent theft

| Model | EK-120i | EK-200i | EK-300i | EK-410i | EK-610i |
|--------------|---------|---------|---------|---------|---------|
| Capacity | 120 g | 200 g | 300 g | 400 g | 600 g |
| Resolution | 0.01 g | | | | |
| Weighing pan | ø110 mm | | | | |

| Model | EK-600i | EK-1200i | EK-2000i | EK-3000i | EK-4100i | EK-6100i |
|--------------|--------------|----------|----------|----------|----------|----------|
| Capacity | 600 g | 1200 g | 2000 g | 3000 g | 4000 g | 6000 g |
| Resolution | 0.1 g | | | | | |
| Weighing pan | 170 × 133 mm | | | | | |

| Model | EK-6000i | EK-12Ki | EW-150i | | |
|--------------|--------------|---------|---------|--------|--------|
| Capacity | 6000 g | 12000 g | 30 g | 60 g | 150 g |
| Resolution | 1 g | | 0.01 g | 0.02 g | 0.05 g |
| Weighing pan | 170 × 133 mm | | ø110 mm | | |

| Model | EW-1500i | | | EW-12Ki | | |
|--------------|--------------|-------|--------|---------|--------|---------|
| Capacity | 300 g | 600 g | 1500 g | 3000 g | 6000 g | 12000 g |
| Resolution | 0.1 g | 0.2 g | 0.5 g | 1 g | 2 g | 5 g |
| Weighing pan | 170 × 133 mm | | | | | |

Options & Accessories

- EKW-04i Comparator relay output
- EKW-07i Underhook (for EK-4100i/6000i/6100i/12Ki, EW-12Ki only)
- EKW-09i Rechargeable battery pack (Ni-MH)
- EJ-12 Carrying case
- AX-3005824-5S Protective cover (5 pcs)

★ EKW-04i and EKW-09i cannot be used at the same time.

GX-K/GF-K Series



GX-K



GF-K

- ✓ Adjustable response characteristics to help cope with the effect of drafts and vibrations (GX-K: manual or automatic / GF-K: manual only)
- ✓ Automatic self calibration to maintain accuracy under temperature changes (GX-K)
- ✓ Multiple weighing units: g, kg, oz, lb, lb-oz, ozt, ct, mom, dwt, gr*, SG, and a user-programmable unit for conversion applications (either tl, tol or N can be added upon request)
- ✓ Density determination function
- ✓ Quick reference card provided

*gr not available with the GX-32K/GF-32K.

IP65 dust and waterproof



- GX-K
-
- Software
- GX-K
- GF-K
-
-
-
-
- GX-K
-
-
-
-
-
-
-
-
- GX/GF-8K2
GX/GF-32K
-

| Model | GX-8K GF-8K | GX-8K2 GF-8K2 | GX-10K GF-10K | GX-12K GF-12K | GX-20K GF-20K | GX-30K GF-30K | GX-32K GF-32K |
|--------------|----------------|------------------|------------------|------------------|------------------|------------------|------------------|
| Capacity | 8.1 kg | 2.1 kg / 8.1 kg | 10.1 kg | 12 kg | 21 kg | 31 kg | 6.1 kg / 31 kg |
| Resolution | 0.01 g | 0.01 g / 0.1 g | 0.01 g | 0.1 g | | 0.1 g / 1 g | |
| Weighing pan | 270 × 210 mm | | | | | | |

Options & Accessories

- GX-04K Comparator output with a buzzer/RS-232C/Current loop output
- GX-06K Analog output/Current loop output
- GX-07K Waterproof RS-232C cable (25P-9P, 5 m)
- GXX-012 Animal weighing pan
- GXX-015 Carrying case
- AX-GXX-31 Breeze Break for GX-K/GF-K

* Only one of GX-04K, GX-06K or the standard RS-232C can be used.
 ** GX-K/GF-K series are not IP65 compliant with GX-04K or GX-06K.

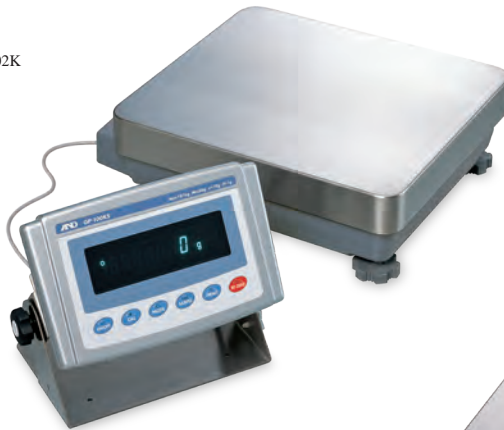
GP Series



GP-32K/32KS/102K



Optional



- ✓ Adjustable swing arm display (models with detached display stand also available)
- ✓ Adjustable (manual or automatic) response characteristics to help cope with the effect of drafts and vibrations
- ✓ Automatic self calibration to maintain accuracy under temperature changes
- ✓ Multiple weighing units: g*, kg, oz, lb, lb-oz, ozt, ct*, mom*, dwt, SG, and a user-programmable unit for conversion applications (either tl, or tol can be added upon request)
- ✓ Density determination function

* g, ct, mom not available with the GP-102K.



Swing arm display

| Model | GP-12K | GP-20K | GP-30K GP-30KS | GP-32K GP-32KS | GP-40K | GP-61K GP-61KS | GP-60K GP-60KS | GP-100K GP-100KS | GP-102K |
|--------------|--------------|--------|-------------------|-------------------|--------|-------------------|-------------------|---------------------|----------------|
| Capacity | 12 kg | 21 kg | 31 kg | 6.1 kg / 31kg | 41 kg | 61 kg | 61 kg | 101 kg | 61 kg / 101 kg |
| Resolution | 0.1 g | | | 0.1 g / 1 g | 0.5 g | 0.1 g | 1 g | 1 g / 10 g | |
| Weighing pan | 384 × 344 mm | | | | | | | 386 × 346 mm | |

Options & Accessories

GP-04 Comparator output with a buzzer/RS-232C Current loop output

GP-06 Analog output/Current loop output

GP-07 5-meter extension cable (for GP-30KS/32KS/61KS/60KS/100KS)

GP-12 Animal weighing pan

GP-20 Underhook (for GP-12K/20K/30K/30KS/32K/32KS/40K)

GP-21 Underhook (for GP-60K/60KS/61K/61KS/100K/100KS/102K)

GP-22 AD-8121B printer support

* Only one of GP-04, GP-06 or the standard RS-232C can be used.

** GP-07 is a factory-installed option.

MC Series



MC-6100



MC-10K

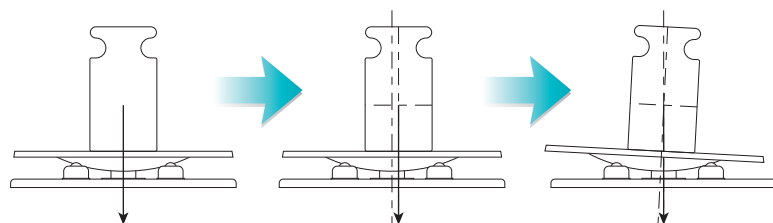


MC-100KS

- ✓ Stabilizing filter to minimize errors due to drafts or vibrations
- ✓ Extra decimal place that also makes it possible to monitor fine weight changes with heavy tare weights
- ✓ Multiple weighing units: g, kg*, oz, ozt, ct, mom, dwt, gr, SG, and a user-programmable unit for conversion applications (either tl or * kg for MC-100KS only tol can be added upon request)
- ✓ Quick reference card provided

Auto-centering pan (available for MC-1000/6100/10K/30K)

The auto-centering pan realizes mass comparison with higher accuracy by correcting eccentric loadings.



| Model | MC-1000 | MC-6100 | MC-10K | MC-30K | MC-100KS |
|--------------------|---|---|---|---------------------|---|
| Capacity | 1100 g | 6100 g | 10.1 kg | 31 kg | 101 kg |
| Resolution | 0.0001 g | 0.001 g | | 0.01 g | 0.1 g |
| Repeatability (a)* | 0.0005 g (for 1 kg) 0.0004 g (for 500 g) | 0.004 g (for 5 kg) 0.0015 g (for 2 kg) | 0.005 g (for 10 kg) 0.004 g (for 5 kg) | 0.015 g (for 20 kg) | 0.2 g (for 100 kg) 0.1 g (for 60 kg) |
| Linearity | ±0.003 g | ±0.03 g | | ±0.2 g | ±2 g |
| Weighing pan | 128 × 128 mm | 165 × 165 mm | 270 × 210 mm | | 386 × 346 mm |

* Repeatability when the auto-centering pan or an automatic loading machine is used under good ambient conditions.

Options & Accessories

- AX-MC1000PAN Auto-centering pan (for MC-1000)
- AX-MC6100PAN Auto-centering pan (for MC-6100)
- AX-MC10K/30KPAN Auto-centering pan (for MC-10K/30K)

* Please refer to the GX, GX-K and GP series for options for MC-1000/6100, MC10K/30K and MC-100KS respectively.

MC-10K
/30K
/100KS



MC-10K
/30K
/100KS



Optional for
MC-100KS



Optional
MC-1000/6100



AD-4212A AD-4212B Series



AD-4212A



AD-4212B



AD-4212A



AD-4212A



AD-4212B-101



- ✓ Protection mechanism against vertical and transverse overloading due to actuator malfunctions, etc.
- ✓ Adjustable response characteristics to help cope with the effect of drafts and vibrations
- ✓ Multiple weighing units*: g, mg, oz, ozt, ct, mom, dwt, gr, (either tl or tol can be added upon request)
- ✓ Automatic zero display after data output
- ✓ Wall/panel-mountable display unit
- ✓ Possible to create your own weighing pan
- ✓ Comparator contact output with buzzer (AD-4212A: 3 level / AD-4212B: 3 or 5 level)
- ✓ Chemically resistant stainless steel** sensor unit (AD-4212B)
- ✓ Comes with a free calibration weight (OIML Class E2 equivalent)

* A user programmable unit is also available with the AD-4212A series
 ** SUS304 for the body and SUS316 for the weighing pan

| Model | AD-4212A-100 | AD-4212A-200 | AD-4212A-600 | AD-4212A-1000 |
|-------------------------------|--------------------------------------|--------------------------------------|--------------------------------------|---------------------------------------|
| Capacity | 110 g | 210 g | 610 g | 1100 g |
| Resolution | 0.1 mg | | 1 mg | |
| Stabilization time (approx.)* | 0-30 g: 1.1 sec 30-110 g: 1.3 sec | 0-30 g: 0.8 sec 30-210 g: 1.0 sec | 0-30 g: 0.9 sec 30-610 g: 1.1 sec | 0-30 g: 0.9 sec 30-1100 g: 1.1 sec |
| Weighing pan | 50 x 50 mm | | 70 x 70 mm | |

| Model | AD-4212B-23 | AD-4212B-101 | AD-4212B-102 | AD-4212B-201 | AD-4212B-301 |
|-------------------------------|-------------|-------------------|--------------|--------------|--------------|
| Capacity | 21 g | 31 g / 110 g | 110 g | 210 g | 310 g |
| Resolution | 0.001 mg | 0.01 mg / 0.1 mg | 0.01 mg | 0.1 mg | |
| Stabilization time (approx.)* | 12 sec | 4.0 sec / 2.5 sec | 4.0 sec | 2.5 sec | |
| Weighing pan | ø34 mm | | | 50 x 50 mm | |

* When set to FAST in a good weighing environment

Optional



Options & Accessories

- AD-4212A-01 BCD output / external contact input
- AD-4212A-04 5-level comparator contact output (for AD-4212A)
- AD-4212A-07 Extension cable (3 m)
- AD-4212A-08 Ethernet interface with WinCT-Plus software

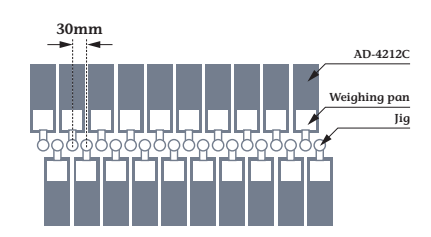
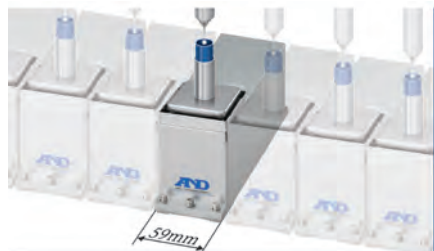
- AD-4212A-19 Stainless steel breeze break (comes as standard with AD-4212A-100 and all AD-4212B models)
- AD-4212A-20 Metal leveling foot

* Only one of AD-4212A-01, AD-4212A-04, AD-4212A-08, or the standard interface can be used.

* The EM-DLC is a high precision electromagnetic weighing sensor with an integrated analog-to-digital converter

AD-4212C Series

Installation images



AD-4212C-301
/3100

- ✓ Direct digital data output to a panel computer, PLC, or PC via RS-232C
- ✓ High-speed data transmission of up to 50 times/second
- ✓ IP65 dust and waterproof construction
- ✓ Protection mechanism against vertical and transverse overloading due to actuator malfunctions, etc.
- ✓ Removable leveling feet for direct attachment on the mounting base
- ✓ Free WinCT-AD4212C software for easy calibration and response setting
- ✓ Comes with a free calibration weight (OIML Class E2 equivalent)
- ✓ CC-Link connection to a PLC through the optional AD-8923-CC remote controller (AD-8923-BCD for BCD output is also available)

AD-8923-CC (sold separately)

Possible to receive power directly from the connected AD-4212C (and vice versa)



| Model | AD-4212C-301 | AD-4212C-300 | AD-4212C-600 | AD-4212C-3100 | AD-4212C-3000 | AD-4212C-6000 |
|-------------------------------|---|--|--|---|---|---|
| Capacity | 51 g / 320 g | 320 g | 620 g | 510 g / 3200 g | 3200 g | 6200 g |
| Resolution | 0.0001 g / 0.001 g | 0.001 g | | 0.001 g / 0.01 g | 0.01 g | |
| Stabilization time (approx.)* | d = 0.0001 g: 1.3 sec d = 0.001 g: 1.0 sec | 0 - 30 g: 0.5 sec 30 - 320 g: 1.0 sec | 0 - 30 g: 0.5 sec 30 - 620 g: 1.0 sec | d = 0.001 g: 1.3 sec d = 0.01 g: 1.0 sec | 0 - 300 g: 0.5 sec 300 - 3200 g: 1.0 sec | 0 - 300 g: 0.5 sec 300 - 6200 g: 1.0 sec |
| Weighing pan | 50 × 50 mm | | | | | |

* When set to FAST in a good weighing environment

Options & Accessories

| | |
|-------------|-----------------------------|
| AD-8923-BCD | Remote controller (BCD) |
| AD-8923-CC | Remote controller (CC-Link) |

AD-1691



- ✓ Supports daily and periodic checks of balance quality and performance
- ✓ Calculates on the spot the expanded uncertainty of calibration based on seven uncertainty components
- ✓ Determines the minimum weight at the actual location of measurement in accordance with United States Pharmacopeia (USP) standards
- ✓ Equipped with the A&D Measurement Environment Evaluation Tool (AND-MEET)* to help improve balance repeatability
- ✓ Quickly outputs the results in report format
- ✓ Can be used as a separate touch-panel display for an A&D balance



Eccentricity error test



Remote control

* Patent pending

AD-1687



- ✓ Simultaneously records environmental (temperature, humidity, barometric pressure, and vibration) and weighing data with time and date
- ✓ Large memory capacity of 10,000 data sets
- ✓ Instant data saving to a PC requiring no special software
- ✓ No battery required when connected to either a balance/scale or PC
- ✓ Trend graph mode to display chronological changes in graph format
- ✓ Interval time setting for environmental data recording
- ✓ Portable size of 127 × 90 × 36 mm (including the protective cover)
- ✓ IP65 dust and waterproof (with the protective cover on)

| Sensor | Resolution | Measurement range | Accuracy |
|---------------------|------------------|----------------------------|--|
| Temperature | 0.1 °C 0.1 °F | 0 to 60 °C 32 to 140 °F | ±0.5 °C (20 to 30 °C) ±0.9 °F (68 to 86 °F) |
| Humidity | 0.1% RH | 0 to 100% RH | ±3% (20 to 80%) |
| Barometric pressure | 0.1 hPa | 500 to 1100 hPa | ±4 hPa (0 to 50 °C) |
| Vibration | 1 Gal | 0 to 2000 Gal | ±20 %, static acceleration |

AD-1688



- ✓ Stores up to 5,000 weighing results, including time and date added by its internal clock and calendar
- ✓ Dual interface – RS-232C to an A&D balance/scale and USB to a PC
- ✓ Highly portable, pocket size of 55 × 103 × 16.5 mm
- ✓ IP65 dust and waterproof (with the casing cover on)
- ✓ Receives power supply directly from the balance/scale or PC, requiring no battery



Quick USB Adapter

AD-8527



- ✓ Enables plug-and-play, real-time transmission of weighing data from an A&D balance/scale RS-232C interface to a PC USB port
- ✓ Internal clock and calendar to add time and date to the weighing results
- ✓ Highly portable, pocket size of 55 × 103 × 16.5 mm
- ✓ IP65 dust and waterproof (with the casing cover on)
- ✓ Receives power supply directly from the balance/scale or PC, requiring no battery

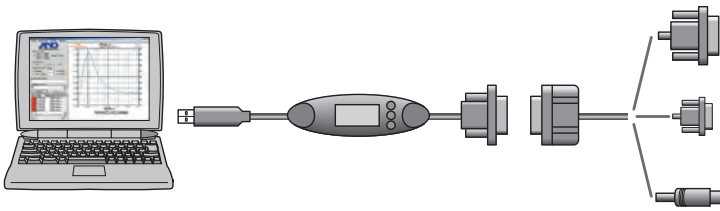
Compact Printer

AD-8127



- ✓ Easy setting and operation with a numeric keypad and LCD display
- ✓ Built-in calendar and clock for printing date and time at any time
- ✓ Sends re-zero and weighing data request commands to the balance/scale
- ✓ Clear and visible dot matrix printing, which also enables long-term preservation of the printed records
- ✓ Dust-free paper (AX-PP173-S) available for use in clean rooms

AX-USB-25P/9P/DIN



- ✓ Converts the RS-232C output from a balance/scale and sends it to a PC USB port
- ✓ Enables you to send commands from a PC to a balance/scale, receive GLP outputs, etc. via USB

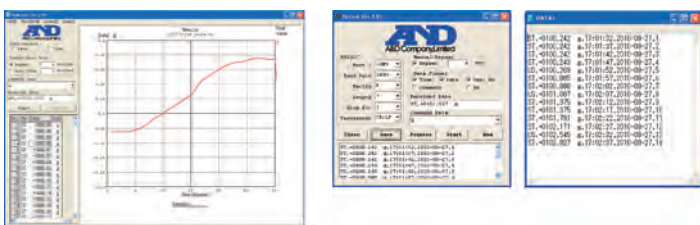
* Please select either D-Sub 25 pin, D-Sub 9 pin, or DIN depending on your balance/scale.

AD-8526



- ✓ Converts the RS-232C output from a balance/scale and sends it to Ethernet
- ✓ Realizes communication between a PC and multiple balances/scales when used with an Ethernet hub
- ✓ Comes with the WinCT-Plus software on CD-ROM (also downloadable from the A&D website)

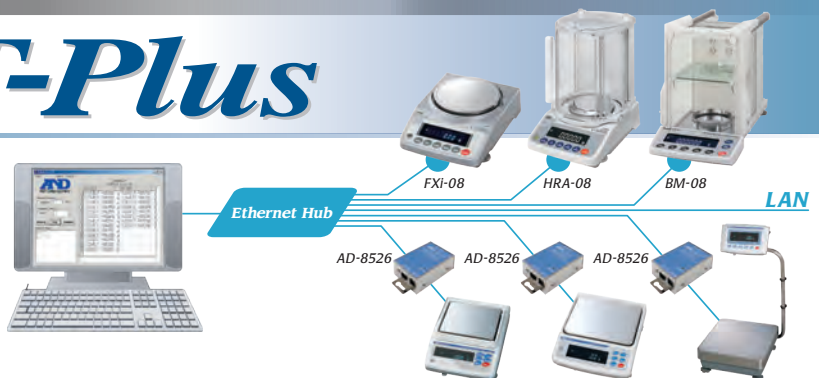
WinCT



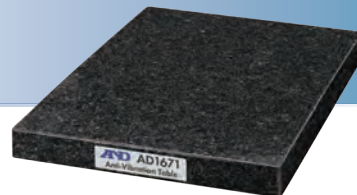
- ✓ Receives data in a text file format from a balance/scale, plots graphs, and/or allows exporting data directly to another application (e.g. Microsoft Excel) on a PC
- ✓ Sends commands to control a balance/scale

WinCT-Plus

- ✓ Sends commands for controlling and acquiring data from multiple balances/scales



AD-1671



- ✓ Isolates a highly sensitive analytical balance from minute vibrations that seriously affect the stability of weighing
- ✓ Fits nicely inside the AD-1672 tabletop breeze break for the BM series of micro analytical balances

| | |
|-----------------------|-------------------------------|
| Max. loading capacity | Approx. 40 kg |
| Material | Natural granite |
| Dimensions | 460 (W) × 400 (D) × 71 (H) mm |
| Weight | Approx. 27 kg |

Tabletop Breeze Break

AD-1672



- ✓ Shields a highly sensitive analytical balance from breezes and minute temperature changes caused by air conditioning, people passing by, or operators themselves
- ✓ Consists of antistatic plastic panels to minimize the effect of static electricity on the balance

| | |
|------------|---|
| Material | Transparent panel: Antistatic vinyl chloride Frame: Aluminum |
| Dimensions | 680 (W) × 600 (D) × 720 (H) mm |
| Weight | Approx. 10 kg |

Remote Display

AD-8920A



- ✓ Displays weighing results to others away from the balance/scale (over the counter, etc.)
- ✓ Receives power supply directly from the balance/scale

| | |
|---------------------|--|
| Dimensions | 128 (W) × 102 (D) × 76 (H) mm |
| Communication cable | Approx. 1 m (optional 5 or 10-meter extension cable available) |

Remote Controller

AD-8922A



- ✓ Remotely controls a balance/scale with key operations
- ✓ Also outputs weighing data to another external device such as a PC or printer via RS-232C connection

| | |
|---------------------|--------------------------------|
| Dimensions | 238 (W) × 132 (D) × 170 (H) mm |
| Communication cable | Approx. 2 m |

Options & Accessories

| | | | |
|-------------|-------------------|-------------|--------------------|
| AD-8922A-01 | BCD output | AD-8922A-05 | Current loop input |
| AD-8922A-04 | Comparator output | AD-8922A-06 | Analog output |

Rechargeable Battery Unit

AD-1682

- ✓ Enables use of a balance/scale in the field without AC power
- ✓ Also gives you peace of mind when stable power supply is not guaranteed

| Applicable product | Duration of continuous operation (typical) |
|----------------------------------|--|
| GX-K/GF-K, GP | 6 hours |
| BM | 7 hours |
| GH, GX/GF, GR, MC, HR-i, AD-1690 | 8 hours |

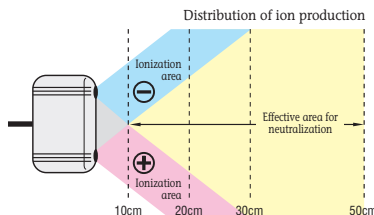


| | |
|---------------|------------------------------|
| Battery type | Nickel-Metal-Hydride (Ni-MH) |
| Charging time | Approx. 15 hours |
| Dimensions | 96 (W) × 140 (D) × 58 (H) mm |

Static Eliminator

AD-1683

- ✓ Instantly neutralizes charged objects to ensure stable weighing
- ✓ Adopts the direct-current (DC) method, which causes no breeze and is therefore ideal for fine powders
- ✓ Long life of approx. 10,000 hours
- ✓ Compact size of 112 (W) × 92 (D) × 60 (D) mm for use on either a desktop or production line



Electrostatic Field Meter

AD-1684

- ✓ Detects the presence of static electricity, which is often the cause of unstable weighing
- ✓ Compact (123 × 73 × 25 mm) and lightweight (approx. 170 g)



Density Determination Kit for Analytical Balances

AD-1653

- ✓ Makes it easy to calculate the density of either a solid or liquid substance
- ✓ Fits the BM-252/200/300/500, GH series and GR series*

* Please use the AD-1654 for the HR-AZ/HR-A series.



SW Series



High pressure, high temperature washdown



Withstands extremely damp environments



Stainless steel frame and load cell

- ✓ Ultimate protection against the effects of condensation as well as water*
- ✓ Streamlined construction for easy cleaning of food-processing residues
- ✓ Stainless steel weighing pan, frame and load cell**
- ✓ Rugged and adjustable (0°, 30°, 60° or 90°) indicator bracket
- ✓ Touch sensitive capacitive keys to prevent damage from sharp objects
- ✓ Auto-tare function to facilitate consecutive check weighing
- ✓ Three sizes of base units, which are also available separately
- ✓ Pole stand attachable to either the short or long side of the platform

* Both IP69K and IP68 compliant

** Weighing pan and frame = SUS304 Load cell = SUS630



Optional



The display unit as an IP69K indicator (SW-D)

You can purchase the SW display unit (SW-D) separately and use it as an IP69K (as well as IP68) indicator with platforms (load cells) other than A&D's.

| Model | SW-6KS | SW-15KS | SW-15KM | SW-30KM | SW-60KM | SW-150KM | SW-60KL | SW-150KL |
|-------------------------|--------------|----------|----------|--------------|----------|----------|--------------|----------|
| Capacity | 6 kg | 15 kg | 15 kg | 30 kg | 60 kg | 150 kg | 60 kg | 150 kg |
| Resolution (switchable) | 0.002 kg | 0.005 kg | 0.005 kg | 0.01 kg | 0.02 kg | 0.05 kg | 0.02 kg | 0.05 kg |
| | 0.001 kg | 0.002 kg | 0.002 kg | 0.005 kg | 0.01 kg | 0.02 kg | 0.01 kg | 0.02 kg |
| | 0.0005 kg | 0.001 kg | 0.001 kg | 0.002 kg | 0.005 kg | 0.01 kg | 0.005 kg | 0.01 kg |
| Weighing pan | 250 × 250 mm | | | 300 × 380 mm | | | 390 × 530 mm | |

♦ g, oz, lb and lb-oz also available (g not available for SW-60K/150K)

Options & Accessories

HC-02i Sealed lead acid rechargeable battery (6 V, 4 Ah)

SW-04 RS-422/485 interface

SW-10 Long pole stand

SW-03 RS-232C + comparator relay output

SW-09 Short pole stand (for SW-6KS/15KS only)

SW-11 Desktop/wall-mount stand

* SW-03 and SW-04 cannot be used at the same time. ** SW series is not IP69K compliant with SW-03 or SW-04.

SC/SE Series



Optional



SC



SE



Easy cleaning



Washdown construction

- ✓ Submersible and fit for extremely wet work environments
- ✓ 5,000 hours of continuous operation with 6 D alkaline batteries
- ✓ High-speed weighing with 1-second stabilization
- ✓ Supersized LCD display with 39 mm character height
- ✓ Stainless steel weighing pan (SC: SUS304 / SE: SUS430)
- ✓ Waterproof and corrosion-resistant load cell*
- ✓ Battery life indicator

* Aluminum anodized and coated with epoxy resin with protective silicon over wiring



SC: stainless steel (SUS304) frame and column



SE: steel frame and column



Easily removable battery unit

| Model | SC-30KAM SE-30KAM | SC-60KAM SE-60KAM | SC-150KAM SE-150KAM | SC-60KAL SE-60KAL | SC-150KAL SE-150KAL |
|-------------------------|----------------------|----------------------|------------------------|----------------------|------------------------|
| Capacity | 30 kg | 60 kg | 150 kg | 60 kg | 150 kg |
| Resolution (switchable) | 0.01 kg 0.005 kg | 0.02 kg 0.01 kg | 0.05 kg 0.02 kg | 0.02 kg 0.01 kg | 0.05 kg 0.02 kg |
| Weighing pan | 300 × 380 mm | | | 390 × 530 mm | |

✦ oz and lb also available

Options & Accessories

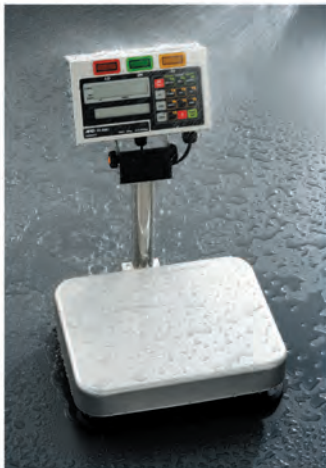
SCE-02 Quick USB interface

SCE-03 RS-232C + comparator relay output

* SCE-02 and SCE-03 cannot be used at the same time.

** SC/SE series is not IP68 compliant with SCE-02 or SCE-03.

FS-i Series



- ✓ Ultra high-speed weighing with 0.5-second stabilization
- ✓ Distinct tricolor LEDs for fast and error-free comparator judgment
- ✓ Take-away checkweighing using the auto-tare function
- ✓ Washable and hygienic stainless steel (SUS304) display unit and weighing pan
- ✓ Waterproof and corrosion-resistant load cell*
- ✓ Fast data acquisition with a refresh rate of 20 times/second
- ✓ Large memory of 100 comparator settings
- ✓ 60-segment analog sweep (horizontal bar) display for intuitive filling control
- ✓ Simple operation mode to prevent accidental changes to the settings

* Aluminum anodized and coated with epoxy resin with protective silicon over wiring

Optional



The display unit as an IP65 indicator for checkweighing scales (FS-D)

The FS-i display unit, or FS-D, has eight preset capacities with three selectable resolutions, and can be used with platforms other than A&D's.

| Model | FS-6Ki | FS-15Ki | FS-30Ki |
|-------------------------|--------------|----------|--------------|
| Capacity | 6 kg | 15 kg | 30 kg |
| Resolution (switchable) | 0.002 kg | 0.005 kg | 0.01 kg |
| | 0.001 kg | 0.002 kg | 0.005 kg |
| | 0.0005 kg | 0.001 kg | 0.002 kg |
| Weighing pan | 250 × 250 mm | | 380 × 300 mm |

♣ g, oz, lb and lb-oz also available

Options & Accessories

HC-02i Sealed lead acid rechargeable battery (6V, 4Ah)

FS-03i RS-232C + comparator relay output

FS-04i RS-422/485 + comparator relay output

★ FS-03i and FS-04i cannot be used at the same time.

HV-C(P)/HW-C(P) Series



HV/HW-CP



HV/HW-C



Platform only



Optional



LED comparator lights



LCD display with white backlight



Alphanumeric keypad

Built-in printer (for the HV/HW-CP series)

- ✓ Stabilization within 1 second (for the HV-C/HV-CP series)
- ✓ Bright and multi-colored 5-step LED comparator lights
- ✓ Take-away checkweighing using the auto-tare function
- ✓ Quick and easy setting using the alphanumeric keypad
- ✓ Built-in printer for creating paper-based records on the spot (for the HV-CP/HW-CP series)
- ✓ IP65 dust & waterproof base unit with a stainless steel (SUS430) pan
- ✓ Three slots for optional data communication interfaces

| Model | HV-15KC HV-15KCP | | | HV-60KC HV-60KCP | | | HV-200KC HV-200KCP | | |
|--------------|--|----------|----------|---------------------|---------|---------|-----------------------|---------|--------|
| | Capacity | 3 kg | 6 kg | 15 kg | 15 kg | 30 kg | 60 kg | 60 kg | 150 kg |
| Resolution | 0.001 kg | 0.002 kg | 0.005 kg | 0.005 kg | 0.01 kg | 0.02 kg | 0.02 kg | 0.05 kg | 0.1 kg |
| Power supply | HV-C series : AC adapter or 4 D batteries (1200 hours) HV-CP series: AC adapter | | | | | | | | |
| Weighing pan | 250 × 250 mm | | | 330 × 424 mm | | | 390 × 530 mm | | |

| Model | HW-10KC HW-10KCP | | HW-60KC HW-60KCP | | HW-100KC HW-100KCP | | HW-200KC HW-200KCP | |
|--------------|--|-------|---------------------|-------|-----------------------|--------|-----------------------|--------|
| | Capacity | 10 kg | | 60 kg | | 100 kg | | 220 kg |
| Resolution | 0.001 kg | | 0.005 kg | | 0.01 kg | | 0.02 kg | |
| Power supply | HW-C series : AC adapter or 4 D batteries (1200 hours) HW-CP series: AC adapter | | | | | | | |
| Weighing pan | 250 × 250 mm | | 330 × 424 mm | | 390 × 530 mm | | | |

Options & Accessories

- HVV-02CB USB interface (for bi-directional communication, type-B)
- HVV-03C RS-232C interface (D-Sub 9P)
- HVV-04C Comparator relay output/buzzer/contact input interface
- HVV-08C Extension cable (5 m)*

- HVV-11C Wall-mount bracket
- HVV-13 Large roller conveyer (for the 100 to 200 kg capacity models)
- HVV-14 Medium-size roller conveyer (for the 60 kg capacity models)
- AX-PP147-S Paper for the built-in printer (5 rolls)

* Recalibration is required after connecting the extension cable.

HV-WP/HW-WP Series



- ✓ Washable and hygienic stainless steel (SUS304) display unit and weighing pan
- ✓ Wide selection from 7 models in total
 - HV-□□□V-WP Triple weighing ranges & VFD display
 - HW-□□□V-WP High resolution (1/10,000) & VFD display
- ✓ Simple batch function and full/dribble batch function
- ✓ Detachable/wall-mountable display unit (optional holder is required)

| Model | HV-15KV-WP | | | HV-60KV-WP | | | HV-200KV-WP | | |
|--------------|--------------|----------|----------|--------------|---------|---------|--------------|---------|--------|
| Capacity | 3 kg | 6 kg | 15 kg | 15 kg | 30 kg | 60 kg | 60 kg | 150 kg | 220 kg |
| Resolution | 0.001 kg | 0.002 kg | 0.005 kg | 0.005 kg | 0.01 kg | 0.02 kg | 0.02 kg | 0.05 kg | 0.1 kg |
| Power supply | AC main | | | | | | | | |
| Weighing pan | 250 × 250 mm | | | 330 × 424 mm | | | 390 × 530 mm | | |

| Model | HW-10KV-WP | HW-60KV-WP | HW-100KV-WP | HW-200KV-WP |
|--------------|--------------|--------------|--------------|-------------|
| Capacity | 10 kg | 60 kg | 100 kg | 220 kg |
| Resolution | 0.001 kg | 0.005 kg | 0.01 kg | 0.02 kg |
| Power supply | AC main | | | |
| Weighing pan | 250 × 250 mm | 330 × 424 mm | 390 × 530 mm | |

Options & Accessories

HVV-02G Extension cable (5 m)

HVV-03G RS-232C + comparator relay output with buzzer

HVV-04WP RS-422/485 + comparator relay output

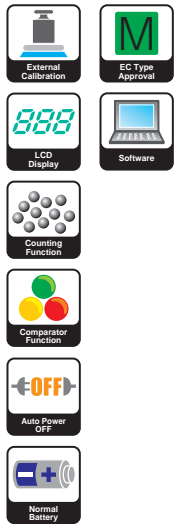
* Only one of HVV-03G, HVV-04WP or the standard RS-232C can be used.

HVV-13 Roller conveyer (large) for HV-200KV-WP, HW-100K/200KV-WP

HVV-14 Roller conveyer (medium) for HV/HW-60KV-WP

AX-043005266 Indicator holder/wall-mount kit

FG Series



Optional



FG-150KAL



FG-60KBM

- ✓ High-speed weighing with 1-second stabilization
- ✓ Display unit either on a column (FG-KAM/KAL) or attached directly to the platform (FG-KBM)
- ✓ Washable stainless steel (SUS430) weighing pan
- ✓ Two types of power supply: AC adapter or normal batteries

| Model | FG-30KAM FG-30KBM | FG-60KAM FG-60KBM | FG-150KAM FG-150KBM | FG-60KAL | FG-150KAL |
|-------------------------|---------------------------------|--------------------------------|-------------------------------|--------------------------------|-------------------------------|
| Capacity | 30 kg | 60 kg | 150 kg | 60 kg | 150 kg |
| Resolution (switchable) | 0.01 kg 0.005 kg 0.002 kg | 0.02 kg 0.01 kg 0.005 kg | 0.05 kg 0.02 kg 0.01 kg | 0.02 kg 0.01 kg 0.005 kg | 0.05 kg 0.02 kg 0.01 kg |
| Weighing pan | 300 × 380 mm | | | 390 × 530 mm | |

Options & Accessories

FG-23 RS-232C interface

FG-24 RS-232C + comparator relay output

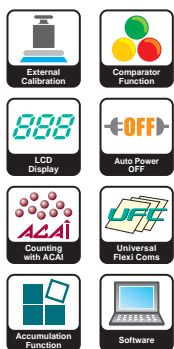
★ FG-23 and FG-24 cannot be used at the same time.

HVW-02G Extension cable (5 m)

AX-3007527-5S Protective cover (5 pcs)

Counting Scales

HC-i Series



Optional



- ✓ Beginner-friendly Unit Weight Registering Navigator
- ✓ Audible Weighing Assist (AWA) beep function
- ✓ Detachable display unit
- ✓ Washable stainless steel (SUS430) weighing pan
- ✓ Memory capacity for up to 99 items
- ✓ Simple operation mode to avoid any unwanted operational mistakes

| Model | HC-3Ki | HC-6Ki | HC-15Ki | HC-30Ki |
|--------------------|--------------|---------|---------|---------|
| Min. unit weight | Normal mode | 0.1 g | 0.2 g | 0.4 g |
| | Fine mode | 0.005 g | 0.01 g | 0.02 g |
| Capacity | 3 kg | 6 kg | 15 kg | 30 kg |
| Resolution | 0.5 g | 1 g | 2 g | 5 g |
| Max. count display | 600,000 | | 750,000 | 600,000 |
| Weighing pan | 300 × 210 mm | | | |

Options & Accessories

HC-02i Sealed Lead Acid rechargeable battery (6V, 4Ah)

HC-03i RS-232C interface

HC-04i RS-232C + comparator relay output

HC-08i Extension cable (2 m)

★ HC-03i and HC-04i cannot be used at the same time.

FC-Si/FC-i Series



-  External Calibration
- FC-Si  SHS Super Hybrid Sensor
-  VFD Display
-  RS-232C Interface
-  Counting with AGAI
-  Accumulation Function
-  Comparator Function
-  Universal Flexi Coms
-  Software

- ✓ Beginner-friendly Unit Weight Registering Navigator
- ✓ High internal resolution (FC-Si: 1/10,000,000 / FC-i: 1/1,000,000) for extremely accurate counting
- ✓ Large memory capacity for up to 500 items
- ✓ Removable stainless steel (SUS304) weighing pan
- ✓ Simple operation mode to avoid any unwanted operational mistakes

Optional



Two scale operation

You can connect a separately-sold weighing platform to count articles that require a larger capacity than that of the FC-Si/FC-i.

| Model | FC-500Si | FC-5000Si | FC-500i | FC-1000i | FC-2000i | FC-5000i | FC-10Ki | FC-20Ki | FC-50Ki | |
|--------------------|--------------|--------------|--------------|-----------|----------|--------------|---------|---------|---------|--------|
| Min. unit weight | Normal mode | 0.001 g | 0.01 g | 0.01 g | 0.02 g | 0.04 g | 0.1 g | 0.2 g | 0.4 g | 1 g |
| | Fine mode | 0.00005 g | 0.0005 g | 0.0005 g | 0.001 g | 0.002 g | 0.005 g | 0.01 g | 0.02 g | 0.05 g |
| Capacity | 500 g | 5000 g | 500 g | 1 kg | 2 kg | 5 kg | 10 kg | 20 kg | 50 kg | |
| Resolution | 0.02 g | 0.2 g | 0.05 g | 0.1 g | 0.2 g | 0.5 g | 1 g | 2 g | 5 g | |
| Max. count display | 9,999,999 | | | 1,000,000 | | | | | | |
| Weighing pan | 128 × 128 mm | 165 × 165 mm | 205 × 152 mm | | | 300 × 280 mm | | | | |

Options & Accessories

- FC-01i Barcode reader
- FC-02i Built-in rechargeable battery pack (Ni-MH)
- FC-03i RS-232C × 2 ch
- FC-04i RS-232C × 1 ch + comparator relay output
- FC-05i Interface for a remote scale

★ FC-03i and FC-04i cannot be used at the same time.

HT Series



HT-120



HT-300/500
/3000/5000



Name plate holder



Stackable carrying case

Takes up less space for storage

- ✓ Three color bars to sort scales easily
- ✓ Long battery life of approx. 450 hours (with alkaline batteries)
- ✓ Security slot in the rear of the scale to accommodate an anti-theft lock
- ✓ Multiple weighing units: g, oz, lb-oz *, ozt, tl, tol, N
- ✓ Optional stainless steel (SUS304) weighing pan

* lb-oz not available with the HT-300

Compact Precision Scale

HT-120

- ✓ High resolution of 0.01 g with excellent repeatability of 0.01 g (σ)
- ✓ Unparalleled battery life of 500 hours (with alkaline batteries, backlight off)
- ✓ Hygienic and chemically resistant stainless steel (SUS304) weighing pan and protector plate
- ✓ Stackable carrying case that economizes space for storage
- ✓ Security slot in the rear of the scale to accommodate an anti-theft lock
- ✓ Multiple weighing units: g, oz, ozt, ct, mom, dwt, gr, tl, tol, N



| Model | HT-120 | HT-300 | HT-500 | HT-3000 | HT-5000 |
|--------------|---------------------|--------|--------|---------|---------|
| Capacity | 120 g | 310 g | 510 g | 3100 g | 5100 g |
| Resolution | 0.01 g | 0.1 g | | 1 g | |
| Weighing pan | ø70 mm 132 × 130 mm | | | | |

Options & Accessories

Stainless steel (SUS304) pan for HT-300/500/3000/5000 (HT-10)
AC adapter

SK-WP Series



- ✓ Washable and hygienic stainless steel (SUS304) construction
- ✓ Long battery life of approx. 1200 hours (with alkaline batteries)
- ✓ Large and wide-angle LCD display with 25 mm character height

| Model | SK-1000WP | SK-2000WP | SK-5000WP | SK-5001WP | SK-10KWP | SK-20KWP | SK-30KWP |
|--------------|--------------|-----------|-----------|-----------|----------|----------|----------|
| Capacity | 1000 g | 2000 g | 5000 g | 5000 g | 10 kg | 20 kg | 30 kg |
| Resolution | 0.5 g | 1 g | 2 g | 1 g | 5 g | 10 g | 20 g |
| Weighing pan | 232 × 192 mm | | | | | | |

Options & Accessories AC adapter* * SK-WP series is not IP65 compliant with the AC adapter.

IP65 Dust & Waterproof Compact Scales

HL-WP Series



- ✓ Washable and hygienic stainless steel (SUS304) construction
- ✓ Battery life of approx. 200 hours (with alkaline batteries)
- ✓ Version with a larger pan size available (HL-3000LWP)

| Model | HL-300WP | HL-1000WP | HL-3000WP | HL-3000LWP |
|--------------|--------------|-----------|-----------|--------------|
| Capacity | 300 g | 1000 g | 3000 g | 3000 g |
| Resolution | 0.1 g | 0.5 g | 1 g | 1 g |
| Weighing pan | 128 × 128 mm | | | 174 × 137 mm |

Options & Accessories AC adapter* * HL-WP series is not IP65 compliant with the AC adapter.

Compact Bench Scales

SJ-HS Series



- ✓ Hygienic and chemically-resistant stainless steel (SUS304) weighing pan
- ✓ High-speed weighing with 1-second stabilization
- ✓ Long battery life of approx. 2000 hours (with alkaline batteries)
- ✓ Multiple weighing units: g, oz, lb, lb-oz
- ✓ Two side handles for easy carrying of the scale

| Model | SJ-1000HS | SJ-2000HS | SJ-5000HS | SJ-5001HS | SJ-12KHS | SJ-20KHS | SJ-30KHS |
|--------------|--------------|-----------|-----------|-----------|----------|----------|----------|
| Capacity | 1000 g | 2000 g | 5000 g | 5000 g | 12 kg | 20 kg | 30 kg |
| Resolution | 0.5 g | 1 g | 2 g | 1 g | 5 g | 10 g | 20 g |
| Weighing pan | 230 × 190 mm | | | | | | |

Options & Accessories AC adapter

Compact Scales

HL-i Series



- ✓ Compact, and storable on side or back to save space
- ✓ Long battery life of approx. 1000 hours (with alkaline batteries)
- ✓ Multiple weighing units: g, oz, tl and ct (HL-200i) or lb-oz (HL-2000i)
- ✓ Optional stainless steel weighing (SUS304) pan and carrying case

| Model | HL-200i | HL-2000i |
|--------------|---------|----------|
| Capacity | 200 g | 2000 g |
| Resolution | 0.1 g | 1 g |
| Weighing pan | ø130 mm | |

Options & Accessories

Stainless steel (SUS304) pan (AX-043008052)
Carrying case (AX-093008304)
AC adapter

Pocket Scale

HJ-150



- ✓ Compact (66 × 98 mm) and lightweight (100 g including batteries)
- ✓ Protective cover that also becomes a weigh boat
- ✓ Comes with a free calibration weight

| Model | HJ-150 |
|--------------|------------|
| Capacity | 150 g |
| Resolution | 0.1 g |
| Weighing pan | 60 × 64 mm |

FZ-CT/FX-CT Series

- ✓ High-speed weighing with 2-second stabilization
- ✓ Removable, shatterproof breeze break with antistatic coating
- ✓ Compact foot print: 198 mm × 294 mm (smaller than an A4 sheet of paper)



- ✓ Rotary sliding doors requiring no extra space at the rear
- ✓ Adjustable response characteristics to help cope with the effect of drafts and vibrations
- ✓ Multiple weighing units: ct, g, oz, lb, lb-oz, ozt, mom, dwt, gr, and a user-programmable unit for conversion applications (either tl, tol or N can be added upon request)

| Model | FZ-500CT FX-500CT | FZ-700CT FX-700CT | FZ-1200CT FX-1200CT |
|-------------------|----------------------|----------------------|------------------------|
| Capacity | 510 ct / 102 g | 760 ct / 152 g | 1260 ct / 252 g |
| Resolution | | 0.001 ct / 0.001 g | |
| Repeatability (σ) | | 0.001 ct / 0.0005 g | |
| Linearity | | ±0.002 ct / ±0.001 g | |
| Weighing pan | | ø90 mm | |

Options & Accessories

- AX-CARATPAN-W Carat pan (silver, 2pcs)
- AX-CARATPAN-B Carat pan (black, 2pcs)

* Please refer to the HR-AZ/HR-A series for other options and accessories available.

- Comparator Function
- Auto Power ON
- Auto Power OFF
- Underhook
- Software
- Internal Calibration
- External Calibration
- SHS Super Hybrid Sensor
- Reverse Backlit LCD
- RS-232C Interface
- GLP Compliant
- Quick USB
- LAN-Ethernet Interface
- Rechargeable Battery
- Counting with ACAI
- Percentage Function
- Animal Weighing
- Statistical Calculation

Jewelry Scale

HT-500GD



- ✓ Multiple weighing units: g, oz, lb-oz, ozt, dwt, ct, tl, tol, N
- ✓ Scratch-resistant stainless steel (SUS304) weighing pan
- ✓ Long battery life of approx. 450 hours (with alkaline batteries)
- ✓ Security slot in the rear of the scale to accommodate an anti-theft lock
- ✓ Stackable carrying case that economizes space for storage

| Model | HT-500GD |
|--------------|--------------|
| Capacity | 510 g |
| Resolution | 0.1 g |
| Weighing pan | 135 × 133 mm |

Options & Accessories

- AC adapter

- External Calibration
- LCD Display
- Auto Power OFF
- Normal Battery



Discover Precision

A&D Company, Ltd.

3-23-14 Higashi-Ikebukuro, Toshima-Ku, Tokyo, 170-0013, Japan Tel: +81 3-5391-6132 Fax: +81 3-5391-1566 <http://www.aandd.jp>

A&D Engineering, Inc.

1756 Automation Parkway, San Jose, CA 95131, U.S.A. Tel: +1 408-263-5333 Fax: +1 408-263-0119

A&D Australasia Pty Ltd.

32 Dew Street, Thebarton, South Australia 5031, Australia Tel: +61 8-8301-8100 Fax: +61 8-8352-7409

A&D Instruments Ltd.

Unit 24/26 Blacklands Way, Abingdon Business Park, Abingdon, Oxfordshire, OX14 1DY, United Kingdom Tel: +44 1235-550420 Fax: +44 1235-550485

<German Sales Office>

Hamburger Straße 30, D-22926, Ahrensburg, Germany Tel: +49 4102-459230 Fax: +49 4102-459231

A&D Korea Ltd.

8F Manhattan Bldg., 33, Gukjegeumyung-ro 6-gil, Yeongdeungpo-gu, Seoul, 07331, Korea Tel: +82 2-780-4101 Fax: +82 2-782-4280

A&D Rus Co., Ltd.

Vereyskaya Str. 17, 121357, Moscow, Russia Tel: +7 495-937-33-44 Fax: +7 495-937-55-66

A&D Instruments India (P) Ltd.

509 Udyog Vihar Phase V Gurgaon-122 016, Haryana, India Tel: +91 (124) 471-5555 Fax: +91 (124) 471-5599